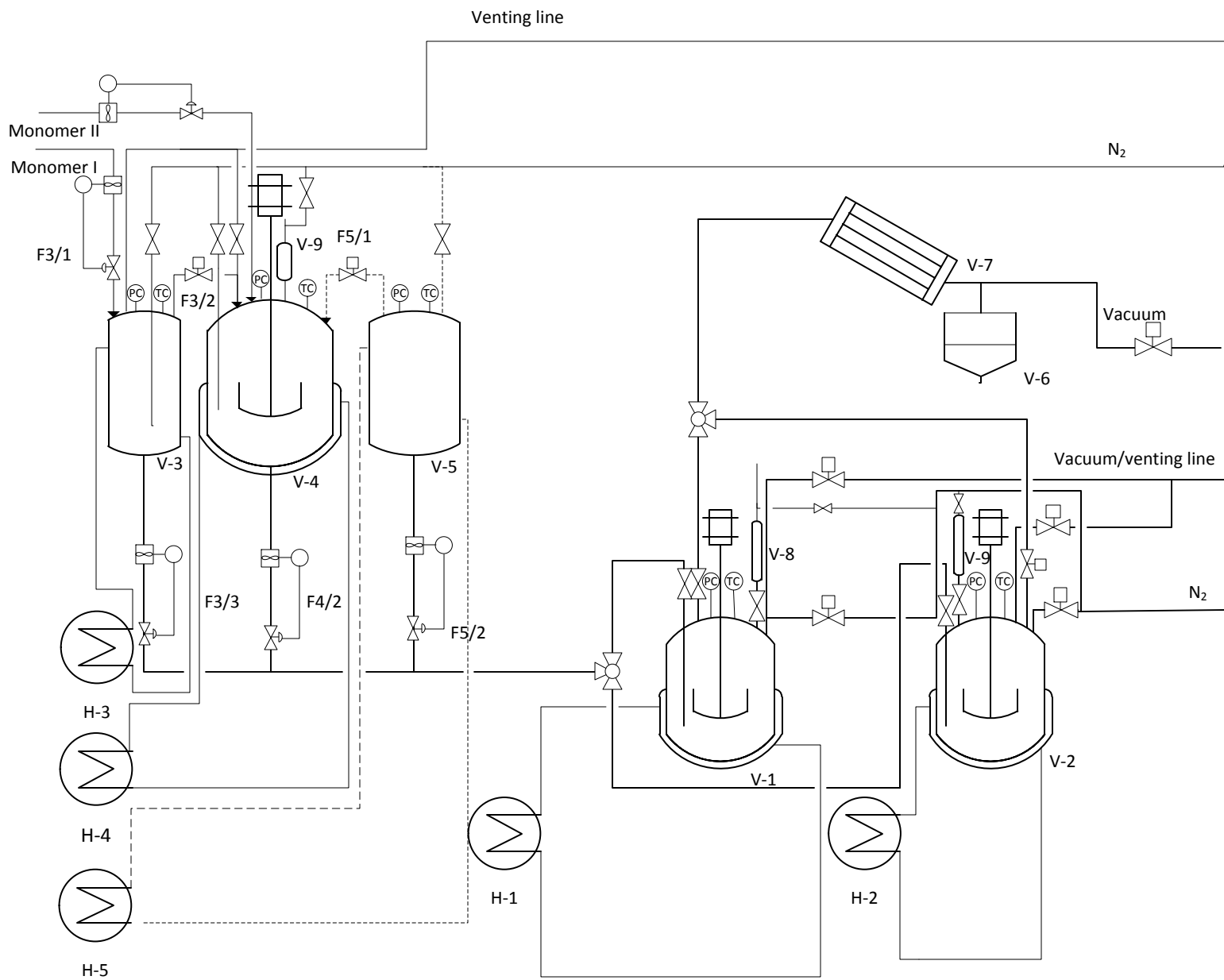


Schematic diagram of 5 L reactors' installation with feeding lines



**Flowmeters:**

- F3/1- flowmeter dosage monomer I from line to V-3
- F3/2- flowmeter dosage monomer I from V-3 to V-4
- F3/3- flowmeter dosage monomer I from V-3 to V-1 or 2
- F4/1- flowmeter dosage monomer II from line to V-4
- F4/2- flowmeter dosage monomer II from V-4 to V-1 or 2
- F5/1- flowmeter dosage monomer III from V-5 to V-4
- F5/2- flowmeter dosage monomer III from V-5 to V-1 or 2

**Legend:**

- V-1: 5L reactor,
- V-2: 5L reactor,
- V-3: Monomer I,
- V-4: Monomer II,
- V-5: Monomer III
- V-6: Condensate vessel
- V-7: Condenser
- V-8: Dosing biurette to V-1
- V-9: Dosing biurette
- H-1: Heating/Cooling system
- H-2: Heating/Cooling system
- H-3: Heating/Cooling system
- H-4: Heating/Cooling system
- H-5: Heating/Cooling system